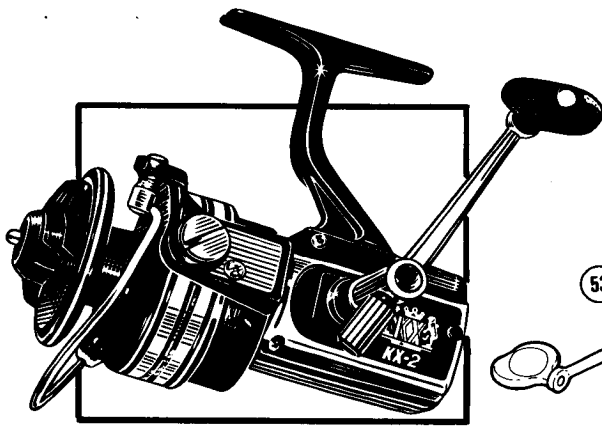
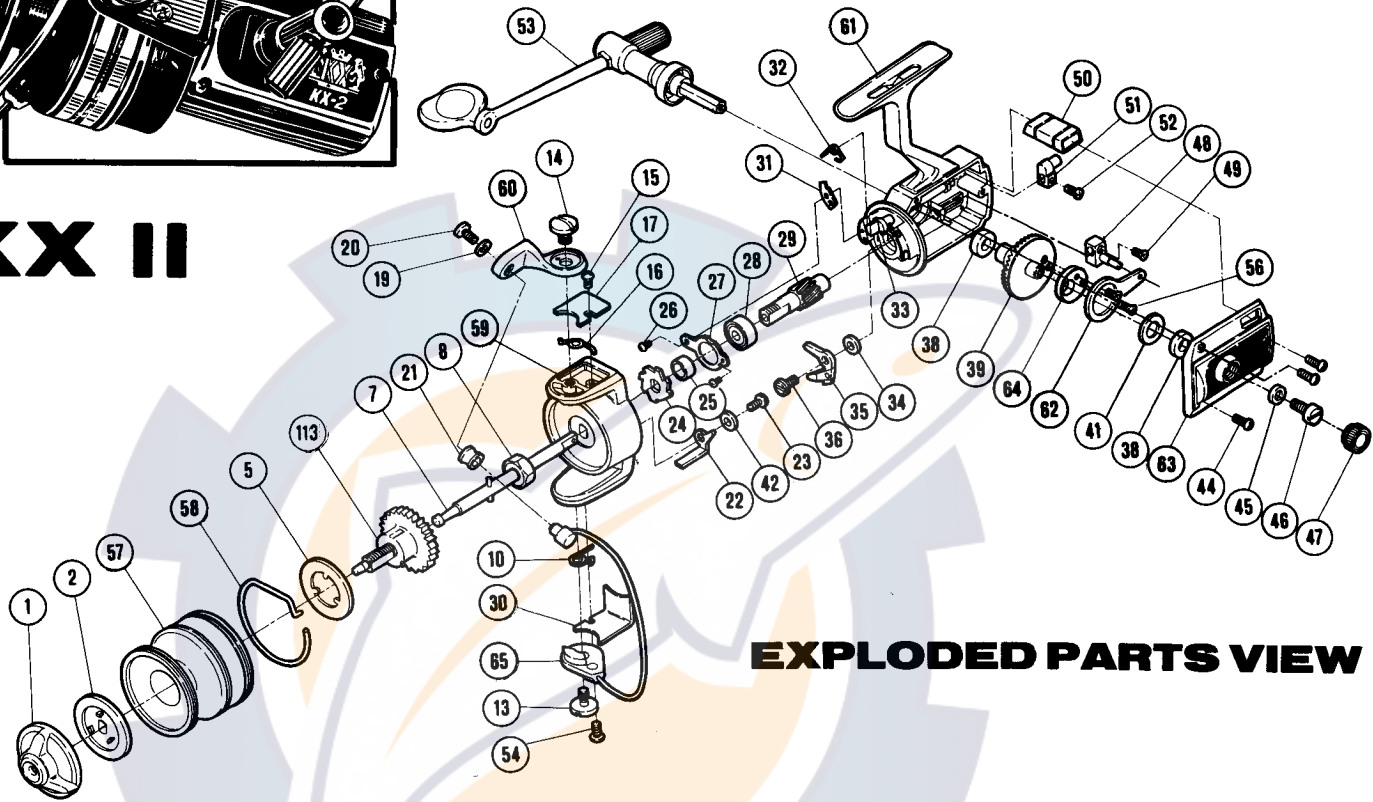


## REPAIR MANUAL KX II

Shimano American Corporation, 205 Jefferson Road  
Parisippany, N.J. 07054



# KX II



### EXPLODED PARTS VIEW

### PARTS LIST

PART #	DESCRIPTION	PRICE	PART #	DESCRIPTION	PRICE	PART #	DESCRIPTION	PRICE
1	Drag Adjusting Knob	1.55	27	Bearing Lock	.15	47	Dust Cap	.35
2	Drag Disk	.30	28	Ball Bearing	5.00	48	Oscillation Block	.65
5	Base Drag Washer	.15	29	Pinion Gear	4.25	49	Oscillation Block Screw	.15
7	Spool Axle	4.15	30	Trip Lever Cover	.30	50	Anti Reverse Switch	1.00
8	Rotor Nut	.25	31	Trip Cam	.30	51	Anti Reverse Actuator	.65
10	Trip Lever Spring	.25	32	Anti Reverse Shaft Spring	.25	52	Actuator Screw	.15
13	Bail Wire Screw	1.50	33	Anti Reverse Shaft	.75	53	Handle	6.00
14	Bail Mount Screw	.50	34	Anti Reverse Dog Spacer	.15	54	Trip Lever Cover Screw	.15
15	Bail Spring Cover Screw	.15	35	Anti Reverse Dog	.50	56	Oscillation Disk Screw	.15
16	Bail Spring	.25	36	Anti Reverse Dog Screw	.35	57	Spool Shell	14.00
17	Bail Spring Cover	.20	38	Drive Gear Bushing	.50	58	Click Spring	.50
19	Line Guide Lock Washer	.15	39	Drive Gear	10.00	59	Rotor	6.40
20	Line Guide Screw	.50	41	Thrust Washer	.15	60	Bail Mount	1.75
21	Roller Line Guide	1.25	42	Trip Lever Spacer	.15	61	Housing	11.00
22	Trip Lever	.65	44	Side Plate Screw	.15	62	Oscillation Guide	.40
23	Trip Lever Screw	.15	45	Handle Screw Lock Washer	.20	63	Side Plate	5.75
24	Anti Reverse Ratchet	.50	46	Handle Retainer Screw	.40	64	Oscillation Disk	.30
25	Anti Reverse Spacer	.25				65	Bail Wire	2.60
26	Bearing Lock Screw	.15				113	Spool Spindle	4.00

Prices and specifications subject to change without notice.

FEBRUARY 1982